

## VC66E SERIES

### DOUBLE DECK, DEEP DEPTH ELECTRIC CONVECTION OVENS



Model VC66ED



LISTED

LISTED

#### SPECIFICATIONS:

Double section, deep depth electric convection oven, Vulcan-Hart Model No. (VC66ED) (VC66EC). Stainless steel front, sides, top and legs. Independently operated stainless steel doors with double pane windows. Non-sag insulation applied to the top, rear, sides, bottom and doors. Porcelain enamel on steel oven interiors measure 29"w x 26<sup>1</sup>/<sub>8</sub>"d x 20"h. Two interior oven lights per section. Five nickel plated oven racks per section measure 28<sup>1</sup>/<sub>4</sub>" x 24<sup>1</sup>/<sub>2</sub>". Eleven position nickel plated rack guides with positive rack stops per section. Each section heated by electric solid sheath elements rated at 12 KW. Furnished with a two speed 1/2 H.P. oven blower-motor per section. Oven cool switch for rapid cool down. 208 or 240 volt, 60 Hz, 1 or 3 phase.

Exterior dimensions: 40"w x 46<sup>1</sup>/<sub>4</sub>"d x 70"h on 8" legs. Depth measurement includes door handles.

NSF listed. U L listed. U L listed to Canadian safety standards.

- VC66ED** Solid state temperature controls adjust from 150° to 500°F. 60 minute timer with audible alarm.
- VC66EC** Computer controls with digital time and temperature readouts. 99-hour timer with audible alarm. Roast and Hold cycle. Six preset menu selections. Shelf I.D. programming.

#### STANDARD FEATURES

- Stainless steel front, sides, top and legs.
- Independently operated stainless steel doors with double pane windows.
- 25 total KW.
- 1/2 H.P. two speed oven blower-motor.
- Moisture vent damper control.
- Oven cool switch for rapid cool down per section.
- Porcelain enamel on steel oven interiors.
- Five nickel plated oven racks with eleven rack positions per section.
- One year limited parts and labor warranty.

#### OPTIONS

- Five hour timer in place of 60 minute timer.
- Casters.
- 480V/60 Hz/1 or 3 phase.
- Second year extended limited parts and labor warranty.

#### ACCESSORIES

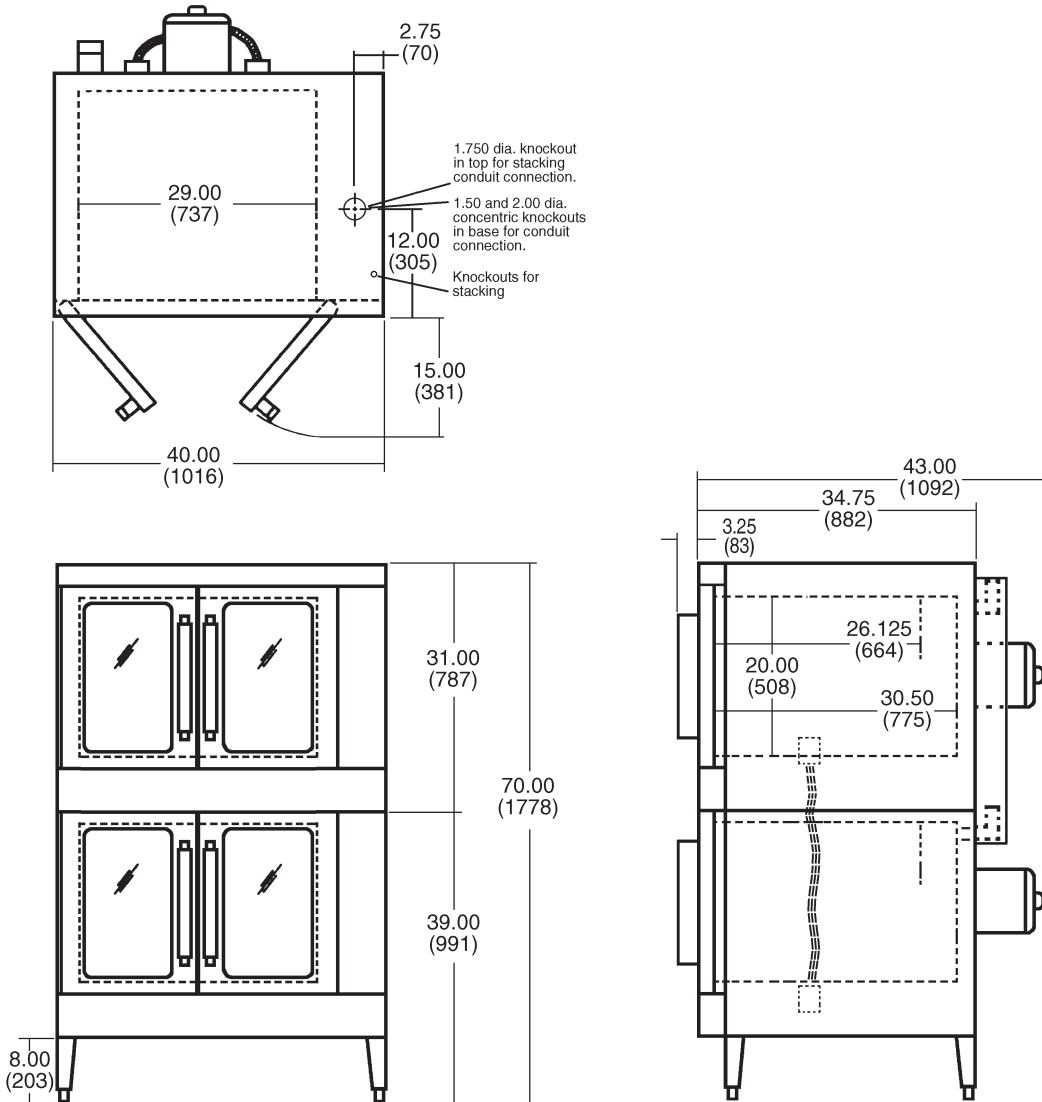
- Stainless steel rear motor enclosure.
- Extra oven rack(s).
- Rack hanger(s).
- Stainless steel drip pan.

# VULCAN

## VC66E SERIES DOUBLE DECK, DEEP DEPTH ELECTRIC CONVECTION OVENS

### OPTIONAL VOLTAGES:

- 480 volt, 60 Hz, 3 phase.
- 220/380 volt, 50 Hz, 1 phase, 3 wire.
- 220/380 volt, 50 Hz, 3 phase, 4 wire.
- 240/415 volt, 50 Hz, 3 phase, 4 wire.



MODEL NO.	TOTAL CONN. KW	3 PHASE LOAD KW PER PHASE			NOMINAL AMPS PER LINE WIRE									1 PHASE	
					3 PHASE						480 VOLT				
		208 VOLT			240 VOLT			480 VOLT			208V	240V			
		X-Y	Y-Z	X-Z	X	Y	Z	X	Y	Z	X	Y	Z		
VC66E	25	8	8	9	70	66	70	66	58	66	28	30	30	120	104

**NOTE:** In line with its policy to continually improve its products, Vulcan-Hart Company reserves the right to change materials and specifications without notice.

VULCAN-HART COMPANY, P.O. BOX 696, LOUISVILLE, KY 40201, TEL. 1-800-814-2028