

**HOBART**701 S Ridge Avenue, Troy, OH 45374  
1-888-4HOBART • www.hobartcorp.com**1HF85C  
ELECTRIC FRYER****HOBART****STANDARD FEATURES**

- Stainless steel front and sides
- 16 gauge stainless steel fry tank, 85 lb. capacity, includes limited 10 year tank warranty
- 1¼" full port ball type drain valve
- 6" adjustable nickel plated, noncorrosive legs
- 24 KW low watt density ribbon style heating elements
- High limit control
- Fat melt cycle
- Automatic basket lifts – single (adds 2¾" to overall depth)
- Filter ready for use with 85HMF-5, or -6 mobile filter
- Cleaning brush and clean-out rod

**ACCESSORIES**

- Stainless steel tank cover
- Grease protector strips
- Single large basket - 18¾"w x 15¼"d x 6"h
- Set of twin baskets - 9¼"w x 15¼"d x 6"h
- Set of tri baskets - 5½"w x 15¼"d x 6"h
- Set of 4 casters (2 locking)
- Flanged feet

**MODELS**

- 1HF85C:** Computer control with digital 12 character display. Completely programmable with 10 product memory. Fat melt cycle. Energy saving idle mode automatically cuts back temperature when fryer is not in use. Adjusts from 200° to 390°F.

Specifications, Details and Dimensions on Reverse Side.

**1HF85C ELECTRIC FRYER**

# 1HF85C ELECTRIC FRYER



701 S Ridge Avenue, Troy, OH 45374  
1-888-4HOBART • www.hobartcorp.com

## SPECIFICATIONS

**CONSTRUCTION:** Stainless steel front, and sides. Mounts on 6" adjustable nickel plated, noncorrosive legs. Single auto basket lift. Filter ready. 16 gauge stainless steel fry tank. 1¼" full port ball type drain valve.

**CLEARANCES:** All models require a 6" clearance at both sides and rear adjacent to combustible construction.

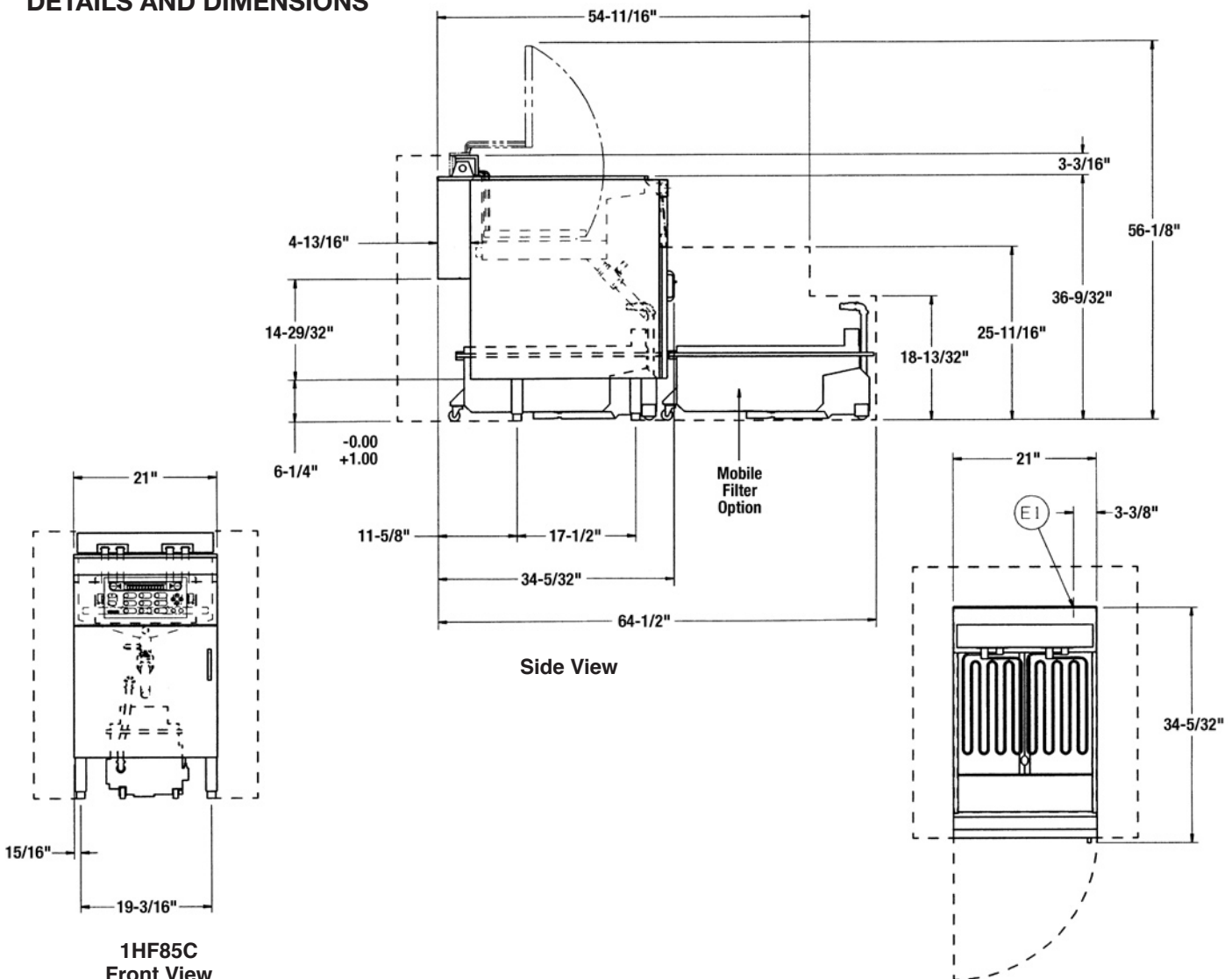
**CAPACITY:** Fry tank holds 85 lbs. of fry compound.

**ELECTRICAL:** 208/60/3, 480/60/3. 24 KW low watt density ribbon style heating elements.

**SHIPPING WEIGHT:** 290 lbs.

ELECTRICAL CHARACTERISTICS									
MODEL NO.	TOTAL KW CONN.	3 PH LOADING KW PER PHASE		NOMINAL AMPS PER LINE WIRE					
				3 PHASE					
		208 & 480V		208 VOLT			480 VOLT		
		X-Y	X-Z	X	Y	Z	X	Y	Z
1HF85C	24	8	8	67	67	67	29	29	29

## DETAILS AND DIMENSIONS



As continued product improvement is a policy of Hobart, specifications are subject to change without notice.