

**HOBART**701 S Ridge Avenue, Troy, OH 45374  
1-888-4HOBART • www.hobartcorp.com**WRAPPING SYSTEM  
ACCESSORIES****HOBART****HAND-WRAP STATIONS****MODELS**

- W32-6 Wrap Station
- W32C-5 Wrap Station

**STANDARD FEATURES  
(both models)**

- Easy to load film
- Low-temperature film cut-off system
- Stainless steel element
- 3-roll film capacity – 8" to 18" wide; Top roll limited to 14" wide
- Fingertip film selection
- Maximum roll outside diameter 9½"
- 3" ID core plugs standard
- Rugged aluminum and stainless steel construction
- Adjustable height from 37" to 39½"
- Operates in all ambient temperatures

**W32 STANDARD FEATURES**

- Furnished with all Hobart Semi-Automatic CLA Systems unless specified otherwise
- Compact 12½" deep x 25" wide design

**W32C STANDARD FEATURES**

- Built-in hotplate
- Deep 26" x 22½" wide frame provides stability for freestanding use

**W32 OPTIONS AT EXTRA COST**

- 55A-SHELFA – Platter Shelf

**W32C OPTIONS AT EXTRA COST**

- 69A-SHELF – Platter Shelf

**SPECIFICATIONS**

**CONSTRUCTION:** Rugged aluminum frame and roll core plugs with stainless steel wrapping surface and roll shafts plated steel.

**DIMENSIONS:** **W32** – 12½" deep x 25" wide;  
**W32C** – 26" deep x 22½" wide.

**OPTIONAL PLATTERS:** **55A** – stainless steel platter shelf w/aluminum mounting brackets. 22" L x 14" W. 10 lbs. shipping weight. **69A** – stainless steel platter shelf w/aluminum mounting brackets. 14½" x 24½". 10 lbs. shipping weight.

**HOTPLATE ON W32C:** 8" x 15" teflon coated

**FILM HOLDERS:** Three roll film selector. 9.5" capacity diameter x 18" maximum length (lower two rolls), 14" maximum length upper roll.

**ELECTRICAL:** **W32** – 100-120/60/1, input 1 amp;  
**W32C** – 100-120/60/1, input 11.3 amps, including hot plate and film cutting rod.

**SHIPPING WEIGHTS:** **W32** – 50 lbs.; **W32C** – 60 lbs.;  
**55A** – 10 lbs.; **69A** – 5 lbs.

**W3-2 Wrap Station****W3-2C Wrap Station with two  
optional 69A Platter Shelves****WRAPPING SYSTEM ACCESSORIES**

# WRAPPING SYSTEM ACCESSORIES

**HOBART**

701 S Ridge Avenue, Troy, OH 45374  
1-888-4HOBART • www.hobartcorp.com

## POWERED SEALER BELT

### MODEL

- SP-5

### STANDARD FEATURES

- 12" wide sealer belt
- Flexible working height 35½" to 38"
- Belt speed 330" per minute

### ACCESSORIES

- Requires 51A sealer legs or 52A sealer support, or both depending on system ordered

### SPECIFICATIONS

**CONSTRUCTION:** Heavy duty stainless steel frame. Durable sealer belt.

**DIMENSIONS (including legs):** 36"H x 42"L x 16¾"W x 3½"D (9"D at motor location).

**ELECTRICAL:** 208-240/60/1, 3 wire, 15 amps. Thermostatic heat control. Motor, subfractional H.P.

**SHIPPING WEIGHT:** *SP-5* - 75 lbs.; *51A* - 10 lbs.; *52A* - 8 lbs.



## ROTARY BIN

### MODELS

- RBG
- RBG-C

### SPECIFICATIONS

**CONSTRUCTION:** Aluminum tub and stainless steel frame, hard rubber casters on RBG-C.

**DIMENSIONS:** Adjustable height from 28⅞" to 37½".

**SHIPPING WEIGHT:** 65 lbs.



## 90P POWER CURVE CONVEYOR (90°)

### MODEL

- 90P

### SPECIFICATIONS

**CONSTRUCTION:** Stainless/aluminum frame and stainless steel legs. Stainless steel side panels. Nylon rollers with stainless steel shafts and strip polyethylene bearings. Rollers removed for washing.

**DIMENSIONS:** Adjustable height from 33½" to 34⅞". Turning radius to roller center is 14¾"

**ELECTRICAL:** 115V, 50/60 Hz, 1 phase, .47 amps and 54 rpm @ 60 Hz, 1/25 HP reversible motor.

**SHIPPING WEIGHT:** 150 lbs.





701 S Ridge Avenue, Troy, OH 45374  
1-888-4HOBART • www.hobartcorp.com

# WRAPPING SYSTEM ACCESSORIES

## ROLLER/DISCHARGE TABLE

### MODELS

- HRT2-1 – 36"L work area, 24"L adjustable conveyor, 34"H
- HRT4-2 – 36"L work area, 12"L adjustable conveyor, 28"H
- HRT5-3 – 36"L work area, 48"L adjustable conveyor, 28"H
- HRT6-2 – 48"L work area, 48"L adjustable conveyor, 28"H

### STANDARD FEATURES

- Work areas are 36" to 48" long
- Available with single or double tiered label dispenser

### ACCESSORIES

- HRT-LD136 – Single label dispenser (36"W table)
- HRT-LD236 – Double tier label dispenser (36"W table)
- HRT-LD248 – Double tier label dispenser (48"W table)
- HRT-LABKIT – 49 additional round disks

### SPECIFICATIONS

**CONSTRUCTION:** Heavy duty stainless steel.

**DIMENSIONS:** 36" to 48" long, 28" to 34" high. Adjustable conveyor 12" to 24" long.

**SHIPPING WEIGHTS:** *HRT2-1* – 183 lbs.; *HRT4-2* – 161 lbs.; *HRT5-3* – 209 lbs.; *HRT6-2* – 227 lbs.; *HRT-LD136* – 23 lbs.; *HRT-LD236* – 24 lbs.; *HRT-LD248* – 43 lbs.; *HRT-LABKIT* – 2 lbs.



## STRAIGHT ROLLER CONVEYORS

### MODEL

- CR-1404

### STANDARD FEATURES

- Can be attached as an extension to CB-1105, CB-1108, or CB-1112 motorized belt conveyors
- Durable 3/4" diameter aluminum rollers

### SPECIFICATIONS

**CONSTRUCTION:** Heavy gauge steel frame and legs with baked epoxy finish (legs on low end only)

**DIMENSIONS:** 45" long, 14" wide, low end adjustable from 18" to 32" high

**SHIPPING WEIGHT:** 67 lbs.



### MODEL

- CONV-EXT

### STANDARD FEATURES

- Durable 3/4" diameter aluminum rollers
- Attaches to CB-1108 or CLA

### SPECIFICATIONS

**CONSTRUCTION:** Heavy gauge steel frame and legs with baked epoxy finish

**DIMENSIONS:** 90" long, 14" wide, 1 1/8" deep, low end adjustable from 18" to 32" high. High end adjustable from 28 1/2" to 41 1/2" high.

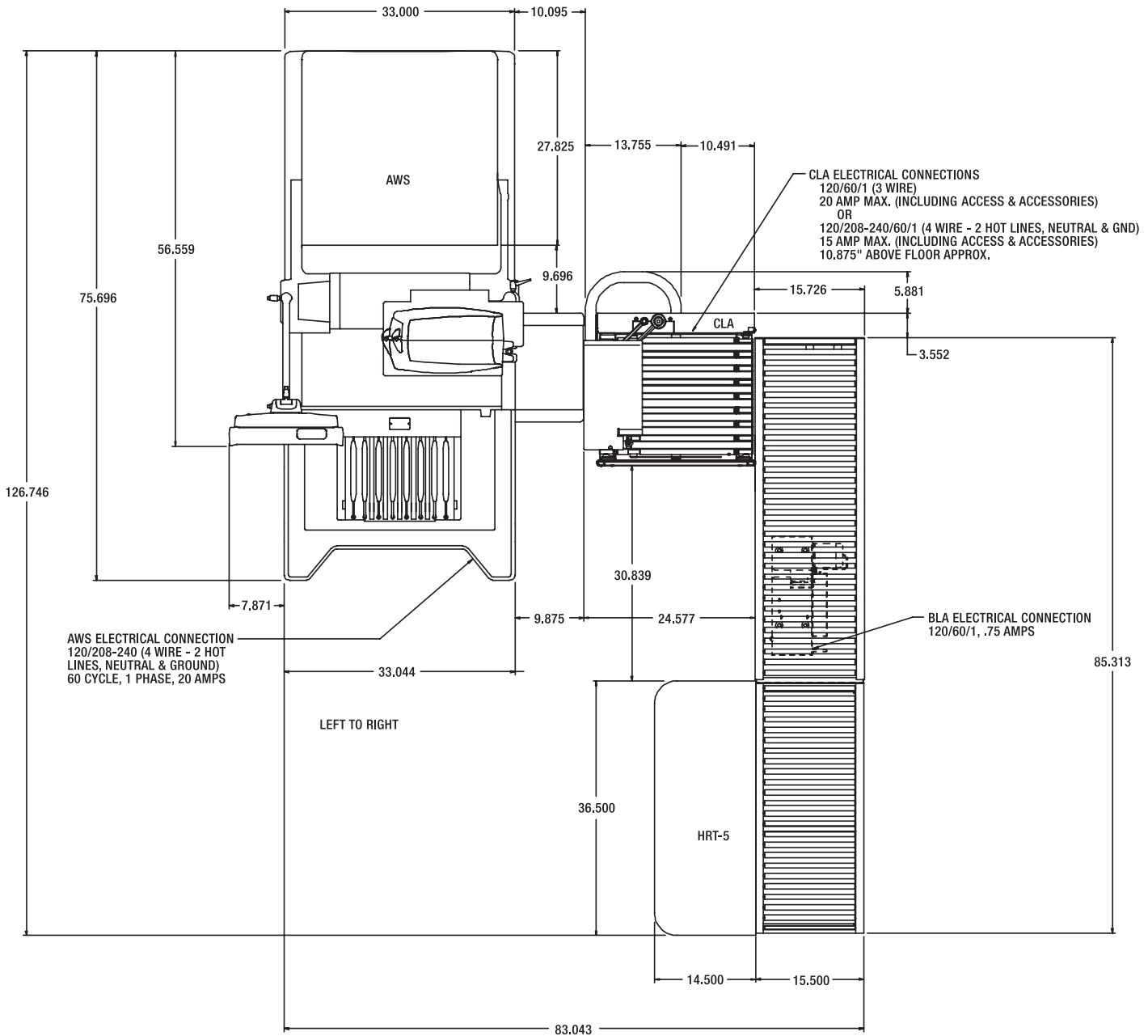
**SHIPPING WEIGHT:** 83 lbs.

# WRAPPING SYSTEM ACCESSORIES



701 S Ridge Avenue, Troy, OH 45374  
1-888-4HOBART • www.hobartcorp.com

## DETAILS AND DIMENSIONS



**AWS/Access CLA System with Roller Conveyor and HRT**

As continued product improvement is a policy of Hobart, specifications are subject to change without notice.